

Collet chuck ER

Application: For clamping tools with cylindrical shank in collets ER

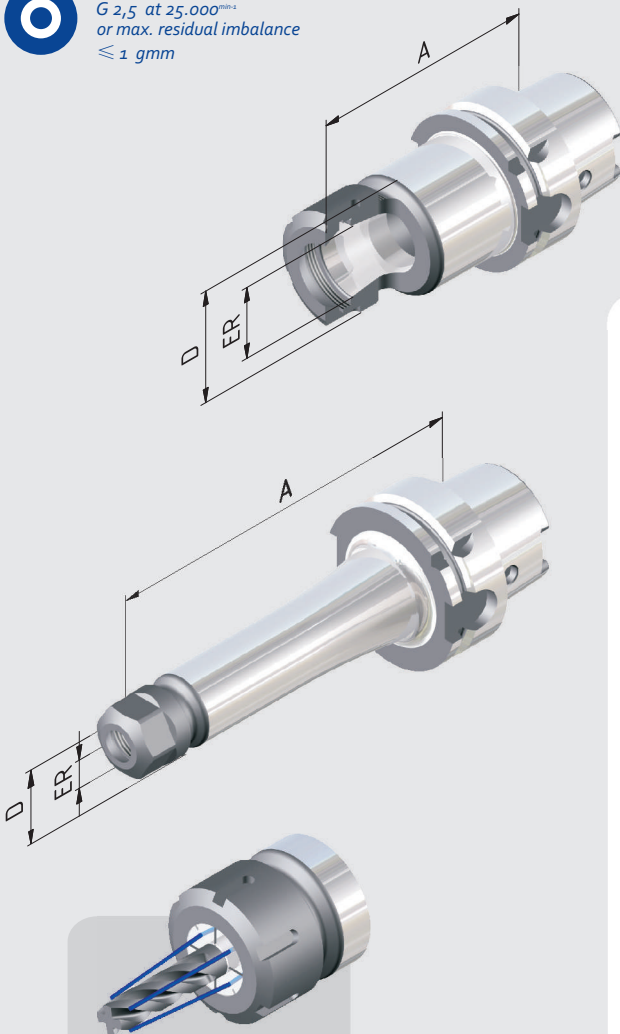
Technical Design: Runout of outer taper to inner taper. Due to adjusted taper tolerances of the ER-Inner taper and the Collet taper max. runout of $\leq 8\mu$ at $2,5 \times D$.

Includes: Clamping nut

Accessories: See page 128.



Fine balanced
 $G 2,5$ at $25.000^{min.}$
or max. residual imbalance
 $\leq 1 \text{ gmm}$



Sealed versions see
pages 130, 131.

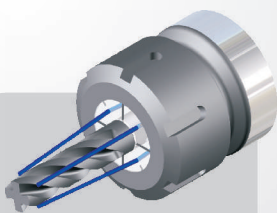
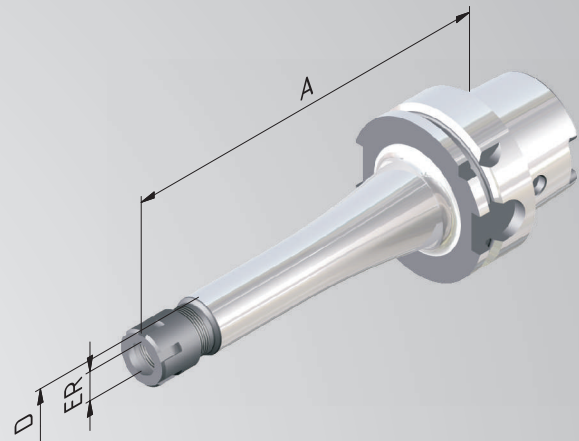
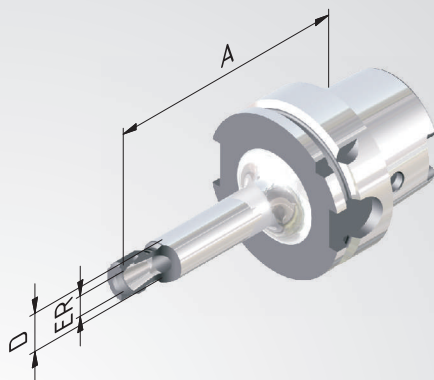
Order No.	HSK	ER	Clamping range	A	D
SHORT					
606302-006	63	11	1-7	75	20
606302-001	63	16	1-10	75	28
606302-002	63	25	1-16	75	42
606302-003	63	32	2-20	75	50
606302-004	63	40	4-26	85	63
= 100					
606302-01	63	16	1-10	100	28
606302-02	63	25	1-16	100	42
606302-03	63	32	2-20	100	50
606302-04	63	40	4-26	120	63
= 130					
606302-32	63	16	1-10	130	28
606302-34	63	25	1-16	130	42
606302-35	63	32	2-20	130	50
606302-36	63	40	4-26	130	63
= 160					
606302-011	63	16	1-10	160	28
606302-021	63	25	1-16	160	42
606302-031	63	32	2-20	160	50
606302-041	63	40	4-26	160	63
= 200					
606302-012	63	16	1-10	200	28
606302-022	63	25	1-16	200	42
606302-032	63	32	2-20	200	50

Collet chuck ER »Mini«

- Application:** For clamping tools with cylindrical shank in collets ER.
- Technical Design:** Runout of outer taper to inner taper. Due to adjusted taper tolerances of the ER-Inner taper and the Collet taper. max. runout of $\leq 8\mu$ at $2,5 \times D$.
- Includes:** Clamping nut.
- Accessories:** See page 128.



Fine balanced
 $G_{2,5}$ at 25.000mm^3
 or max. residual imbalance
 $\leq 1\text{ gmm}$



Sealed versions see pages 130, 131.

Order No.	HSK	ER	Clamping range	A	D
				= 100	
606302-21	63	11	1-7	100	16
606302-23	63	16	1-10	100	22
606302-25	63	20	1-13	100	28
606302-27	63	25	1-16	100	35
				= 130	
606302-51	63	11	1-7	130	16
606302-52	63	16	1-10	130	22
606302-53	63	20	1-13	130	28
606302-54	63	25	1-16	130	35
				= 160	
606302-22	63	11	1-7	160	16
606302-24	63	16	1-10	160	22
606302-26	63	20	1-13	160	28
606302-28	63	25	1-16	160	35