

Hawk Eye[®]

engineered by SCHÜSSLER



www.k-schuessler.de

sk
the μ -maker
SCHÜSSLER

The new precision ER collet chuck Hawk Eye®

engineered by SCHÜSSLER

We are proud to present our new precision ER collet chuck HAWK EYE®. Highly accurate runout quality additional with high clamping forces allow a high efficient cutting process. Thereby you can use the full potential of your machine and cutting tools.



Hawk Eye® – your benefits in focus

The deep-seated collet inside the chuck guarantees:

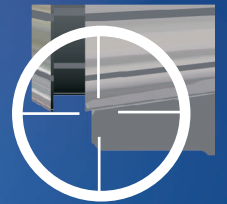
- > **runout of cutting tool**
 $\leq 3\mu$ at $2,5 \times D^*$
- > **maximum radial rigidity**
- > **more contact in the chuck**, for higher clamping forces

* in use of original SCHÜSSLER collets.

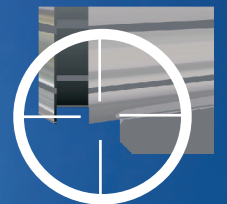


runout of cutting tool
 $\leq 3\mu$ at $2,5 \times D$

Deep seat
of the
collet inside:



For comparison
a standard ER
collet chuck:

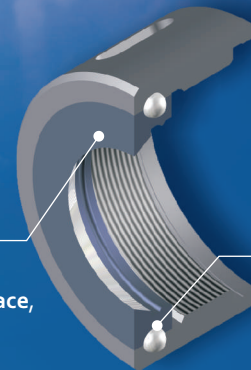


Fine pitch thread
for maximum clamping
force



Enforced body
for better stability
and higher radial
rigidity

**Clamping ring with
special treated surface,**
for highest clamping
forces

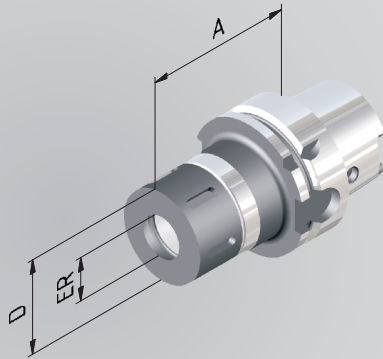


**Ball bearing
clamping nut**

Precision collet chuck Hawk Eye[®], HSK 63



Fine balanced
G_{2,5} at 25.000 min⁻¹
or max. residual imbalance
≤ 1 gmm

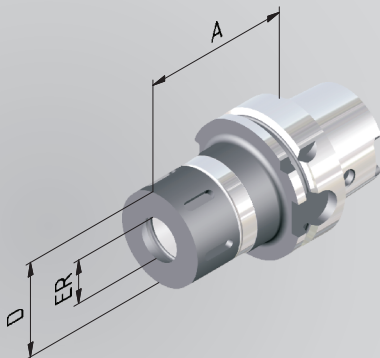


| Order No. | HSK | ER | D | A | Clamping Range* | Group |
|------------|-----|----|----|-----|-----------------|-------|
| 606332-002 | 63 | 16 | 34 | 75 | 1–10 | D |
| 606332-004 | 63 | 25 | 44 | 75 | 1–16 | D |
| 606332-005 | 63 | 32 | 52 | 75 | 2–20 | D |
| 606332-006 | 63 | 40 | 62 | 85 | 4–26 | D |
| 606332-02 | 63 | 16 | 34 | 100 | 1–10 | D |
| 606332-04 | 63 | 25 | 44 | 100 | 1–16 | D |
| 606332-05 | 63 | 32 | 52 | 100 | 2–20 | D |
| 606332-06 | 63 | 40 | 62 | 120 | 4–26 | D |

Precision collet chuck Hawk Eye[®], HSK 100



Fine balanced
G_{2,5} at 25.000 min⁻¹
or max. residual imbalance
≤ 1 gmm

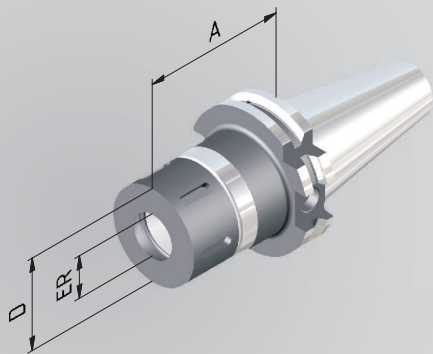


| Order No. | HSK | ER | D | A | Clamping Range* | Group |
|------------|-----|----|----|-----|-----------------|-------|
| 610032-004 | 100 | 25 | 44 | 75 | 1–16 | D |
| 610032-005 | 100 | 32 | 52 | 75 | 2–20 | D |
| 610032-006 | 100 | 40 | 62 | 85 | 4–26 | D |
| 610032-04 | 100 | 25 | 44 | 100 | 1–16 | D |
| 610032-05 | 100 | 32 | 52 | 100 | 2–20 | D |
| 610032-06 | 100 | 40 | 62 | 100 | 4–26 | D |

Precision collet chuck Hawk Eye[®], SK 40 Form AD/B



Fine balanced
G_{2,5} at 25.000 min⁻¹
or max. residual imbalance
≤ 1 gmm



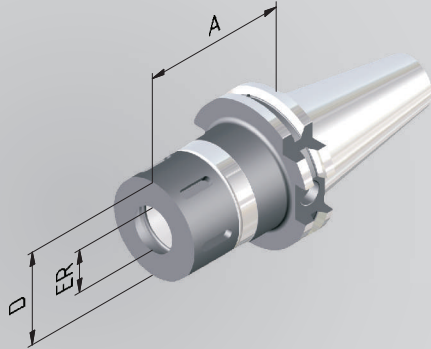
| Order No. | SK | ER | D | A | Clamping Range* | Group |
|-----------|----|----|----|-----|-----------------|-------|
| 714032-02 | 40 | 16 | 34 | 70 | 1–10 | D |
| 714032-04 | 40 | 25 | 44 | 70 | 1–16 | D |
| 714032-05 | 40 | 32 | 52 | 70 | 2–20 | D |
| 714032-06 | 40 | 40 | 62 | 70 | 4–26 | D |
| 714032-32 | 40 | 16 | 34 | 100 | 1–10 | D |
| 714032-34 | 40 | 25 | 44 | 100 | 1–16 | D |
| 714032-35 | 40 | 32 | 52 | 100 | 2–20 | D |
| 714032-36 | 40 | 40 | 62 | 100 | 4–26 | D |

* The chuck can only clamp the nominal diameter of the collet.
Scope of delivery: including clamping nut.

Precision collet chuck Hawk Eye[®], SK 50 Form AD/B



Fine balanced
G_{2,5} at 25.000 min⁻¹
or max. residual imbalance
≤ 1 gmm

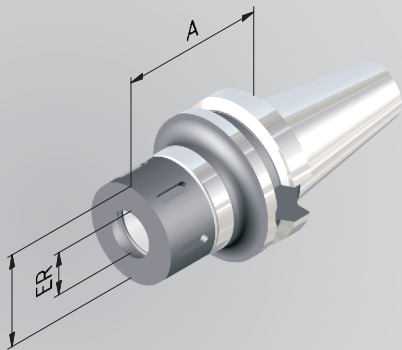


| Order No. | SK | ER | D | A | Clamping Range* | Group |
|-----------|----|----|----|-----|-----------------|-------|
| 715032-04 | 50 | 25 | 44 | 70 | 1–16 | D |
| 715032-05 | 50 | 32 | 52 | 70 | 2–20 | D |
| 715032-06 | 50 | 40 | 62 | 70 | 4–26 | D |
| 715032-34 | 50 | 25 | 44 | 100 | 1–16 | D |
| 715032-35 | 50 | 32 | 52 | 100 | 2–20 | D |
| 715032-36 | 50 | 40 | 62 | 100 | 4–26 | D |

Precision collet chuck Hawk Eye[®], BT 40 AD/B



Fine balanced
G_{2,5} at 25.000 min⁻¹
or max. residual imbalance
≤ 1 gmm

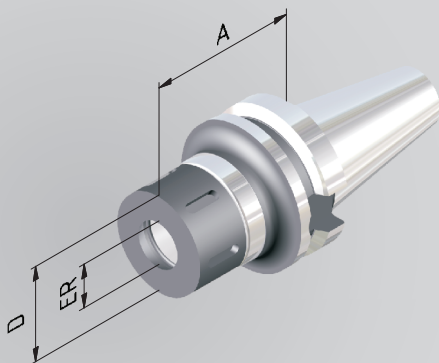


| Order No. | BT | ER | D | A | Clamping Range* | Group |
|-----------|----|----|----|-----|-----------------|-------|
| 754032-02 | 40 | 16 | 34 | 70 | 1–10 | D |
| 754032-04 | 40 | 25 | 44 | 70 | 1–16 | D |
| 754032-05 | 40 | 32 | 52 | 70 | 2–20 | D |
| 754032-06 | 40 | 40 | 62 | 70 | 4–26 | D |
| 754032-32 | 40 | 16 | 34 | 100 | 1–10 | D |
| 754032-34 | 40 | 25 | 44 | 100 | 1–16 | D |
| 754032-35 | 40 | 32 | 52 | 100 | 2–20 | D |
| 754032-36 | 40 | 40 | 62 | 100 | 4–26 | D |

Precision collet chuck Hawk Eye[®], BT 50 AD/B



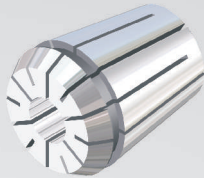
Fine balanced
G_{2,5} at 25.000 min⁻¹
or max. residual imbalance
≤ 1 gmm



| Order No. | BT | ER | D | A | Clamping Range* | Group |
|-----------|----|----|----|-----|-----------------|-------|
| 755032-04 | 50 | 25 | 44 | 70 | 1–16 | D |
| 755032-05 | 50 | 32 | 52 | 70 | 2–20 | D |
| 755032-06 | 50 | 40 | 62 | 80 | 4–26 | D |
| 755032-34 | 50 | 25 | 44 | 100 | 1–16 | D |
| 755032-35 | 50 | 32 | 52 | 100 | 2–20 | D |
| 755032-36 | 50 | 40 | 62 | 100 | 4–26 | D |

* The chuck can only clamp the nominal diameter of the collet.
Scope of delivery: including clamping nut.

ER-collets, repeatable accuracy of collet 5 μ



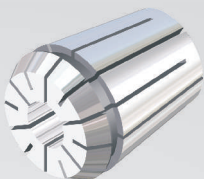
NEW:
Corrosion-Resistant!

- High precision design with concentricity and repeat accuracy of 5 μ .
- All lengthwise edges deburred and rounded additionally. This protects the inner cone of the chuck and provides consistently high concentricity.
- Increased holding forces and rigidity by super-finish-version.

| Order No. | ER | Diam. | increasing | Group |
|-----------|----|----------|------------|-------|
| 124-1xxx | 16 | 1,0-2,5 | 0,5 | C |
| | | 3,0-10,0 | 1 | C |
| 124-3xxx | 25 | 1,0-2,5 | 0,5 | C |
| | | 3,0-16,0 | 1 | C |
| 124-4xxx | 32 | 2,0-2,5 | 0,5 | C |
| | | 3,0-20,0 | 1 | C |
| 124-5xxx | 40 | 4,0-26,0 | 1 | C |

Please complete the item no. with the respective diameter of the collet, i.e. ER 16 with \varnothing 2,5 = 124-1025.

ER-collets, repeatable accuracy of collet 2 μ



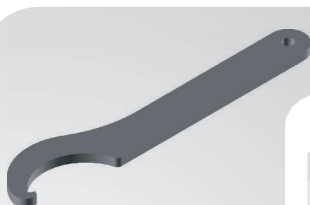
NEW:
Corrosion-Resistant!

- Ultra high precision design with concentricity and repeat accuracy of 2 μ .
- All lengthwise edges deburred and rounded additionally. This protects the inner cone of the chuck and provides consistently high concentricity.
- Increased holding forces and rigidity by super-finish-version.

| Order No. | ER | Diam. | increasing | Group |
|-----------|----|----------|------------|-------|
| 131-1xxx | 16 | 1,0 | 1 | C |
| | | 2,0 | 1 | C |
| | | 3,0-10,0 | 1 | C |
| 131-3xxx | 25 | 1,0 | 1 | C |
| | | 2,0 | 1 | C |
| | | 3,0-16,0 | 1 | C |
| 131-4xxx | 32 | 2,0 | 1 | C |
| | | 3,0-20,0 | 1 | C |
| 131-5xxx | 40 | 4,0-26,0 | 1 | C |

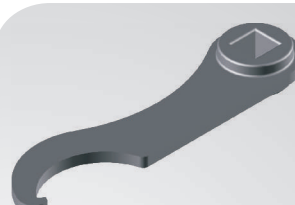
Please complete the item no. with the respective diameter of the collet, i.e. ER 16 with \varnothing 6,0 = 131-106.

Wrench ER



| Order No. | ER | Group |
|-----------|----|-------|
| 160-21 | 16 | C |
| 160-23 | 25 | C |
| 160-24 | 32 | C |
| 160-25 | 40 | C |

Wrench for torque spanner



| Order No. | ER | Group |
|-----------|----|-------|
| 160-31 | 16 | C |
| 160-33 | 25 | C |
| 160-34 | 32 | C |
| 160-35 | 40 | C |



BRILLIANT PERFORMANCE FROM BODELSHAUSEN

For over 40 years, Schüssler has been manufacturing tool holders from a single location – Bodelshausen. Today it is one of the leading manufactures. Founded by Karl Schüssler in 1970, right from the beginning, the company began producing tool holders.

Our quality features are way beyond the requirement of standard. Our experienced sales staff provide friendly and competent consulting services for all our products.

OUR PRODUCT RANGE (EXCERPT)

- Collet chucks, ER and ER »Mini«
- Shrink fit holder
- End mill holder weldon
- Tool holders with coolant for »Cool Tool« tool
- Shell mill holder, and many more

All tool holders are available in all standard taper shanks, such as:

- HSK-40/50/63/100 Form A and E
- SK 40 and 50 DIN 69871 Form AD/B
- MAS BT 30 /40/50
- Polygon shaft »CORUM« C4/5/6/8

All types of tool holder are available in various lengths as standard and fine balanced to G2,5 at 25.000 min⁻¹ or max. unbalance <= 1 gmm.



Karl Schüssler GmbH & Co. KG
Bahnhofstraße 108
D-72411 Bodelshausen
Phone +49 74 71 / 95 90-0
Fax +49 74 71 / 95 90-90

www.k-schuessler.de

