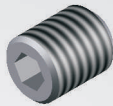
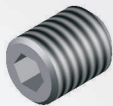


Clamping screw for endmill holder



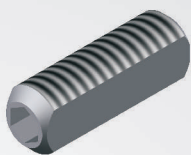
Order No.	for Ø	Thread
235-02	6	M6
235-03	8	M8
235-04	10	M10
235-05	12+14	M12
235-06	16+18	M14
235-07	20	M16
235-08	25	M18x2
235-09	32	M20x2

Clamping screw for slim endmill holder with ball head



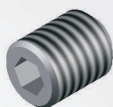
Order No.	for Ø	Thread
236-02	6-12	M6
236-03	14-20	M8

Length adjustment screw for slim endmill holder



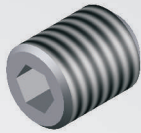
Order No.	for Ø	Thread
238-01	6	M5
238-02	8	M6
238-03	10	M8x1
238-04	12 + 14	M10x1
238-06	16 + 18	M12x1
238-08	20	M16x1

Plug screw for cool tool bore



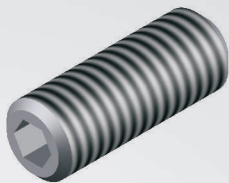
Order No.	for Ø	Thread
242-01	6-32	M3

Clamping screw for Whistle-Notch



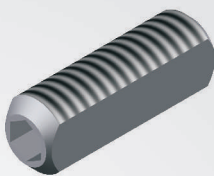
Order No.	for Ø	Thread
235-02	6	M6
235-03	8	M8
235-04	10	M10
235-05	12+14	M12
235-06	16+18	M14
235-07	20	M16
235-08	25	M18x2
235-09	32	M20x2

Length adjustment screw for Whistle-Notch



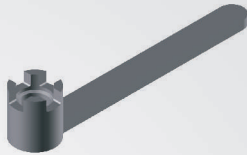
Order No.	for Ø	Thread
237-01	6	M5
237-02	8	M6
237-03	10	M8
237-04	12	M10
237-05	14	M10
237-06	16	M12
237-07	18	M12
237-08	20	M16
237-09	25+32	M20

Length adjustment screw for shrink fit holder



Order No.	for Ø	Thread
238-01	6	M5
238-02	8	M6
238-03	10	M8x1
238-04	12+14	M10x1
238-06	16+18	M12x1
238-08	20+25+32	M16x1

Wrench for shell mill holder



Order No. for Ø

226-03	16
226-04	22
226-05	27
226-06	32
226-07	40
226-08	50
226-09	60

Clamping screw for shell mill holder



Order No. for Ø Thread

225-03	16	M8
225-04	22	M10
225-05	27	M12
225-06	32	M16
225-07	40	M20
225-08	50	M24
225-09	60	M30

Drive key for shell mill holder



Order No. for Ø

240-01	16
240-02	22
240-03	27
240-04	32
240-05	40
240-06	50
240-07	60

SK40 SHORT for Ø

240-01	16
240-02	22
240-43	27
240-04	32
240-05	40

Drive key for CORUM



Order No. C₄ for Ø

240-01	16
240-42	22

C₅ for Ø

240-01	16
240-02	22
240-43	27
240-44	32

C₆ for Ø

240-01	16
240-02	22
240-43	27
240-44	32

C₈ for Ø

240-01	16
240-02	22
240-43	27
240-44	32

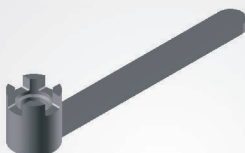
Drive key screws



Order No. for Ø

240-31	16
240-32	22
240-33	27
240-34	32
240-35	40
240-36	50
240-37	60

Wrench for combi shell mill holder



Order No. for Ø

226-03	16
226-04	22
226-05	27
226-06	32
226-07	40

Clamping screw for combi shell mill holder



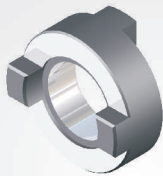
Order No.	for Ø	Thread
225-03	16	M8
225-04	22	M10
225-05	27	M12
225-06	32	M16
225-07	40	M20

Adjustment spring



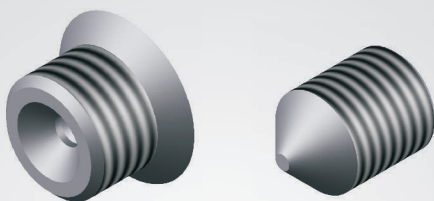
Order No.	for Ø
223-02	16
223-03	22
223-04	27
223-05	32
223-06	40

Drive key



Order No.	for Ø
224-03	16
224-04	22
224-05	27
224-06	32
224-07	40

Spare parts for ABS holders



Clamping set consisting of tapered screw and clamping screw.

Order No.	ABS
400-01	25
400-02	32
400-03	40
400-04	50
400-05	63
400-06	80
400-07	100