

Collet chuck ER

Application: For clamping tools with cylindrical shank in collets ER

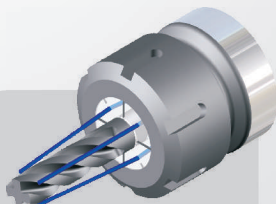
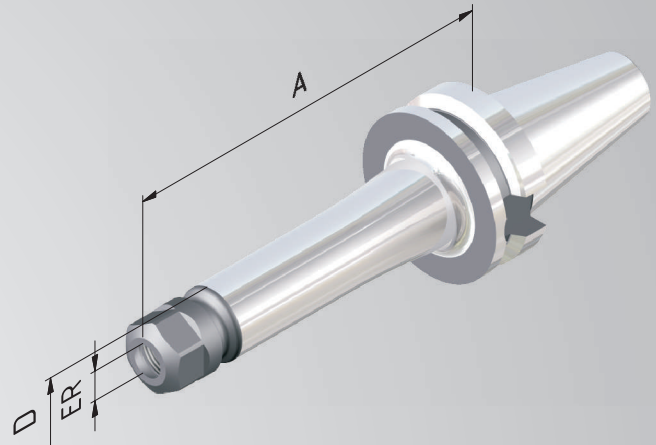
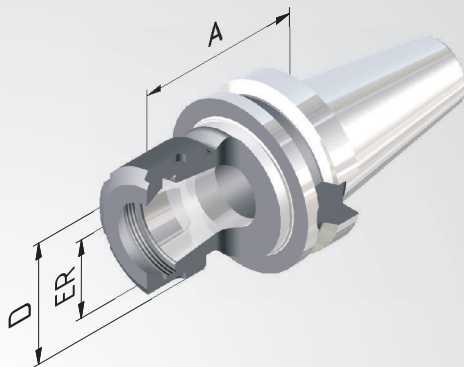
Technical Design: Runout of outer taper to inner taper. Due to adjusted taper tolerances of the ER-Inner taper and the collet taper max. runout of $\leq 8\mu$ at $2,5 \times D$.

Includes: Clamping nut.

Accessories: See page 128.



Fine balanced
G 2,5 at 25.000^{min-1}
or max. residual imbalance
 $\leq 1 \text{ gmm}$



Sealed versions see
pages 130,131.

Order No.	BT	ER	Clamping range	A	D
				= 70	
754002-01	40	16	1-10	70	28
754002-03	40	25	1-16	70	42
754002-04	40	32	2-20	70	50
754002-05	40	40	4-26	70	63
				= 100	
754002-31	40	16	1-10	100	28
754002-33	40	25	1-16	100	42
754002-34	40	32	2-20	100	50
				= 160	
754002-61	40	16	1-10	160	28
754002-63	40	25	1-16	160	42
754002-64	40	32	2-20	160	50