

Collet chuck ER »Mini«

Application: For clamping tools with cylindrical shank in collets ER.

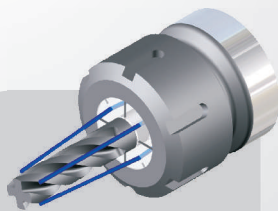
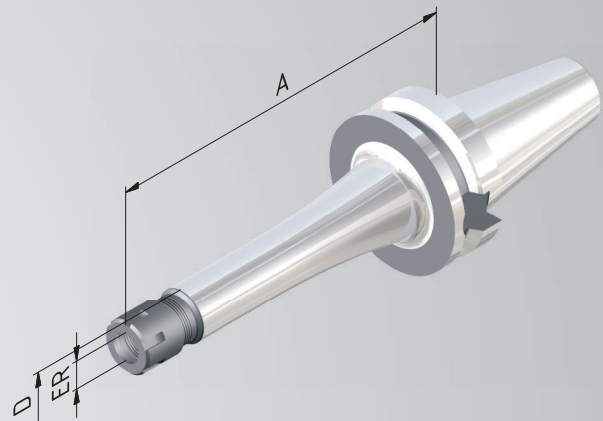
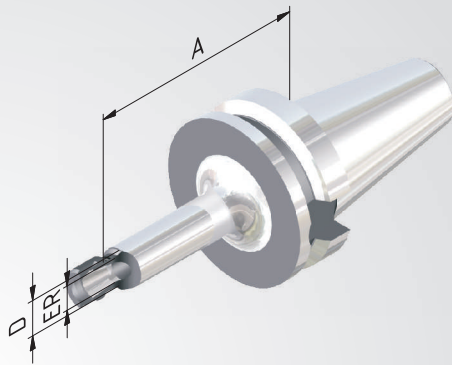
Technical Design: Runout of outer taper to inner taper. Due to adjusted taper tolerances of the ER-Inner taper and the collet taper. max. runout of $\leq 8\mu$ at $2,5 \times D$.

Includes: Clamping nut.

Accessories: See page 128.



Fine balanced
 $G_{2,5}$ at $25.000^{min.}$
or max. residual imbalance
 $\leq 1 \text{ gmm}$



Sealed versions see
pages 130,131.

Order No.	BT	ER	Clamping range	A	D ₁
				= 100	
754002-41	40	11	1-7	100	16
754002-43	40	16	1-10	100	22
754002-45	40	25	1-16	100	35
				= 160	
754002-42	40	11	1-7	160	16
754002-44	40	16	1-10	160	22
754002-46	40	25	1-16	160	35