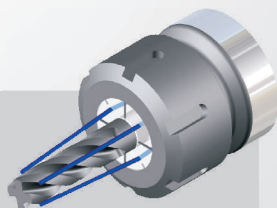
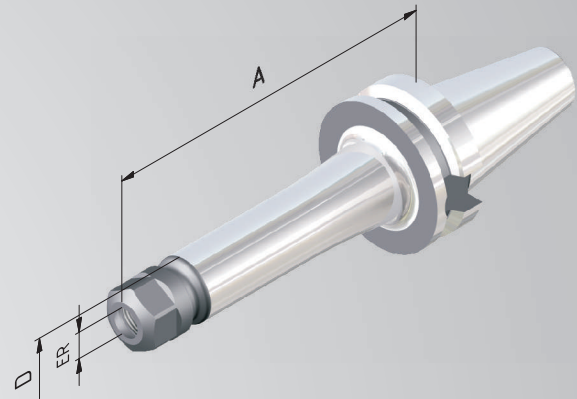
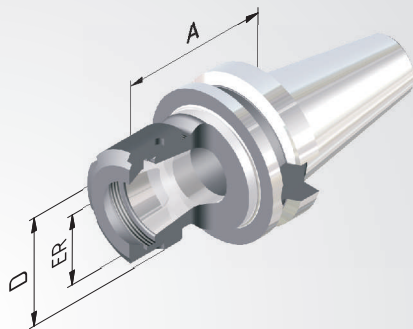


Collet chuck ER

- Application:** For clamping tools with cylindrical shank in collets ER
- Technical Design:** Runout of outer taper to inner taper. Due to adjusted taper tolerances of the ER-Inner taper and the collet taper max. runout of $\leq 8\mu$ at $2,5 \times D$.
- Includes:** Clamping nut.
- Accessories:** See page 128.



Fine balanced
 $G_{2,5}$ at 25.000^{min}
or max. residual imbalance
 $\leq 1 \text{ gmm}$



Sealed versions see
pages 130,131.

Order No.	BT	ER	A SHORT	D	Clamping range
755002-01	50	16	70	28	1-10
755002-02	50	25	70	42	1-16
755002-03	50	32	70	50	2-20
755002-04	50	40	80	63	4-26
= 100					
755002-31	50	16	100	28	1-10
755002-32	50	25	100	42	1-16
755002-33	50	32	100	50	2-20
755002-34	50	40	100	63	4-26
= 160					
755002-61	50	16	160	28	1-10
755002-62	50	25	160	42	1-16
755002-63	50	32	160	50	2-20
755002-64	50	40	160	63	4-26