

Endmill holder Weldon

Application: For clamping tools with cylindrical shank according to DIN 1835 B.

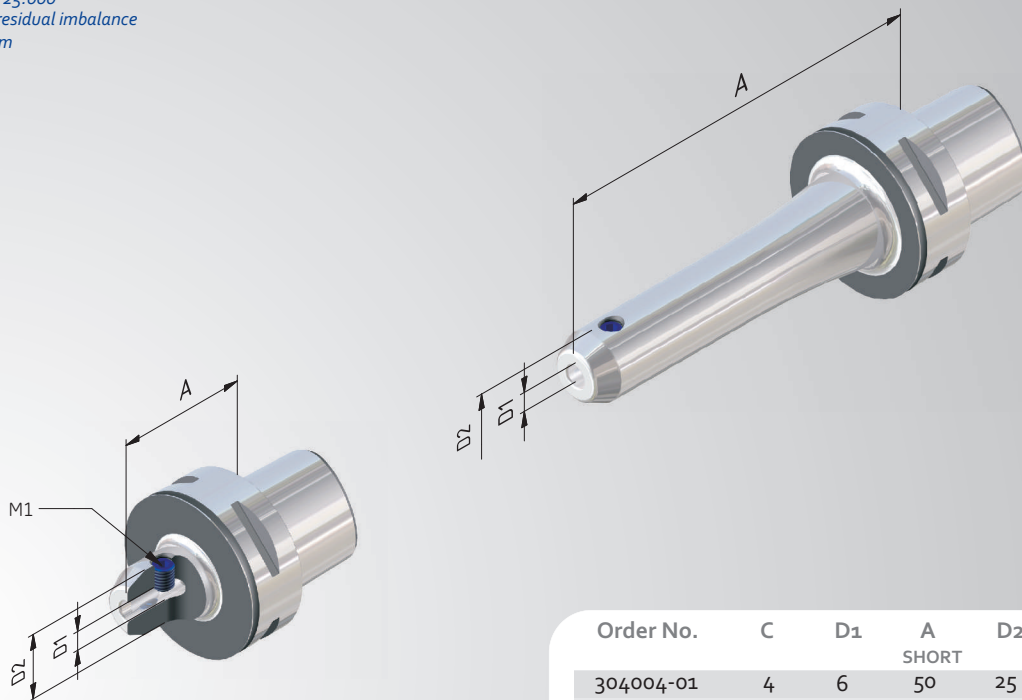
Technical Design: Runout of outer taper to $D_1 \leq 0,003$ mm. Tolerance of bore H4 (more accurate as DIN).

Includes: Clamping screw.

Accessories: See page 132.

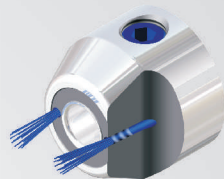


Fine balanced
 $G 2,5$ at 25.000mm^{-1}
or max. residual imbalance
 ≤ 1 gmm



Order No.	C	D1	A	D2	M
SHORT					
304004-01	4	6	50	25	M6
304004-02	4	8	50	28	M8
304004-03	4	10	50	35	M10
304004-04	4	12	55	42	M12
304004-05	4	14	55	44	M12
304004-06	4	16	55	48	M14
SHORT					
305004-01	5	6	50	25	M6
305004-02	5	8	50	28	M8
305004-03	5	10	55	35	M10
305004-04	5	12	60	42	M12
305004-05	5	14	60	44	M12
305004-06	5	16	60	48	M14
305004-07	5	18	60	50	M14
305004-08	5	20	60	52	M16
305004-09	5	25	80	65	M18x2

Endmill holder Weldon



Order No.	C	D1	A	D2	M
SHORT					
306304-01	6	6	55	25	M6
306304-02	6	8	55	28	M8
306304-03	6	10	60	35	M10
306304-04	6	12	60	42	M12
306304-05	6	14	60	44	M12
306304-06	6	16	65	48	M14
306304-07	6	18	65	50	M14
306304-08	6	20	65	52	M16
306304-09	6	25	80	65	M18x2
306304-10	6	32	90	72	M20x2
Version »Cool Tool«					
3063041-01	6	6	55	25	M6
3063041-02	6	8	55	28	M8
3063041-03	6	10	60	35	M10
3063041-04	6	12	60	42	M12
3063041-05	6	14	60	44	M12
3063041-06	6	16	65	48	M14
3063041-07	6	18	65	50	M14
3063041-08	6	20	65	52	M16
3063041-09	6	25	80	65	M18x2
3063041-10	6	32	90	72	M20x2
= 100					
306304-31	6	6	100	25	M6
306304-32	6	8	100	28	M8
306304-33	6	10	100	35	M10
306304-34	6	12	100	42	M12
306304-35	6	14	100	44	M12
306304-36	6	16	100	48	M14
306304-37	6	18	100	50	M14
306304-38	6	20	100	52	M16
= 130					
306304-51	6	6	130	25	M6
306304-52	6	8	130	28	M8
306304-53	6	10	130	35	M10
306304-54	6	12	130	42	M12
306304-56	6	16	130	48	M14
306304-58	6	20	130	52	M16
SHORT					
308004-01	8	6	70	25	M6
308004-02	8	8	70	28	M8
308004-03	8	10	70	35	M10
308004-04	8	12	70	42	M12
308004-05	8	14	70	44	M12
308004-06	8	16	70	48	M14
308004-07	8	18	70	50	M14
308004-08	8	20	70	52	M16
308004-09	8	25	80	65	M18x2
308004-10	8	32	80	72	M20x2