

Collet chuck ER

Application: For clamping tools with cylindrical shank in collets ER

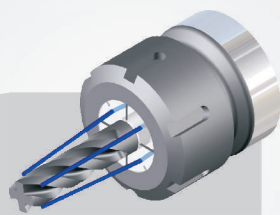
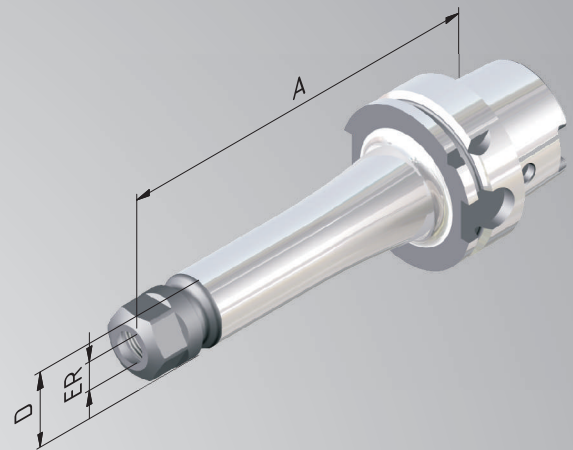
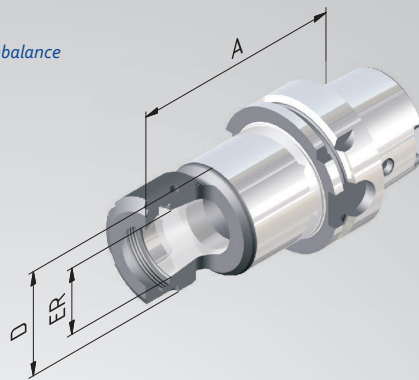
Technical Design: Runout of outer taper to inner taper. Due to adjusted taper tolerances of the ER-Inner taper and the Collet taper max. runout of $\leq 8\mu$ at $2,5 \times D$.

Includes: Clamping nut.

Accessories: See page 128.



Fine balanced
 $G 2,5$ at 25.000^{rpm}
or max. residual imbalance
 $\leq 1 \text{ gmm}$



Sealed versions see
pages 130, 131.

Order No.	HSK	ER	Clamping Range	A	D
608002-01	80	16	1-10	^{= 100} 100	28
608002-02	80	25	1-16	100	42
608002-03	80	32	2-20	100	50
				^{= 160} 160	
608002-011	80	16	1-10	160	28
608002-021	80	25	1-16	160	42
608002-031	80	32	2-20	160	50