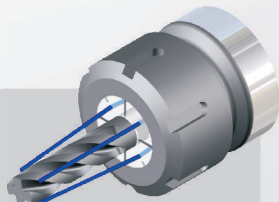
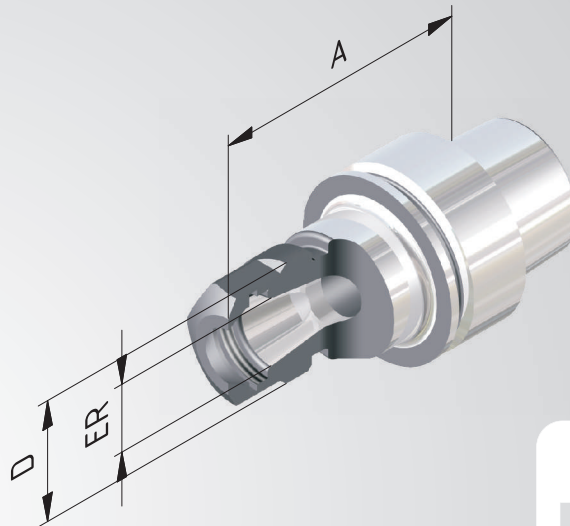


Collet chuck ER

- Application:** For clamping tools with cylindrical shank in collets ER
- Technical Design:** Runout of outer taper to inner taper. Due to adjusted taper tolerances of the ER-Inner taper and the collet taper max. runout of $\leq 8\mu$ at $2,5 \times D$.
- Includes:** Clamping nut.
- Accessories:** See page 128.



Fine balanced
 $G 2,5$ at 25.000^{min-1}
or max. residual imbalance
 $\leq 1 \text{ gmm}$



Sealed versions see
pages 130, 131.

Order No.	HSK	ER	A	D
	40		EXTRA SHORT	
404002-001	40	11	60	19
404002-002	40	16	60	28
404002-003	40	25	70	42
			= 80	
404002-01	40	16	80	28
404002-02	40	25	80	42
	50		EXTRA SHORT	
405002-001	50	16	60	28
405002-002	50	25	70	42
405002-003	50	32	80	50
			= 100	
405002-01	50	16	100	28
405002-03	50	25	100	42
405002-04	50	32	100	50