

## Collet chuck ER

**Application:** For clamping tools with cylindrical shank in collets ER

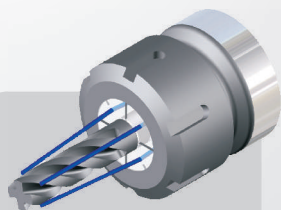
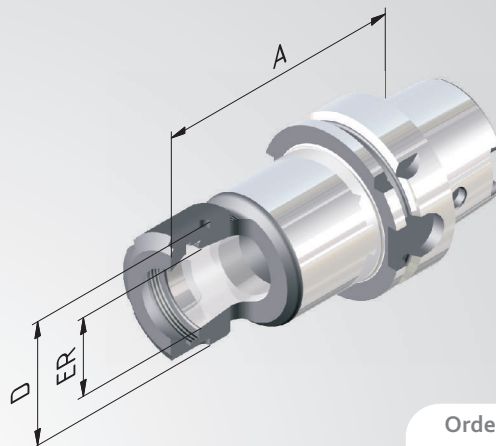
**Technical Design:** Runout of outer taper to inner taper. Due to adjusted taper tolerances of the ER-Inner taper and the collet taper max. runout of  $\leq 8\mu$  at  $2,5 \times D$ .

**Includes:** Clamping nut.

**Accessories:** See page 128.



**Fine balanced**  
 $G 2,5$  at  $25.000^{rpm}$   
 or max. residual imbalance  
 $\leq 1 \text{ gmm}$



Sealed versions see  
 page 130.

Order No.	HSK	ER	Clamping range	A	D
40					
EXTRA SHORT					
604002-001	40	16	1-10	60	28
604002-002	40	25	1-16	70	42
604002-003	40	32	2-20	70	50
SHORT					
604002-07	40	11	1-7	80	19
604002-01	40	16	1-10	80	28
604002-02	40	25	1-16	80	42
604002-03	40	32	2-20	100	50
50					
EXTRA SHORT					
605002-001	50	16	1-10	60	28
605002-002	50	25	1-16	70	42
605002-003	50	32	2-20	80	50
SHORT					
605002-01	50	16	1-10	100	28
605002-02	50	25	1-16	100	42
605002-03	50	32	2-20	100	50